

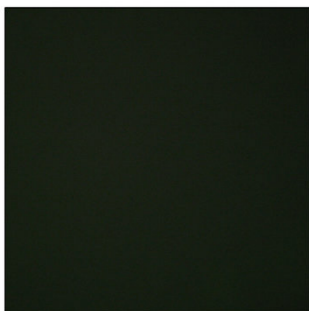
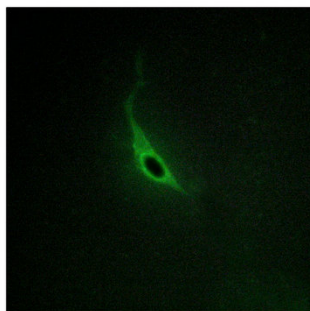


p164-RhoGEF Polyclonal Antibody

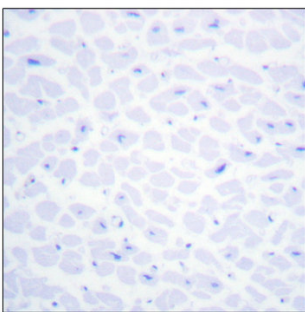
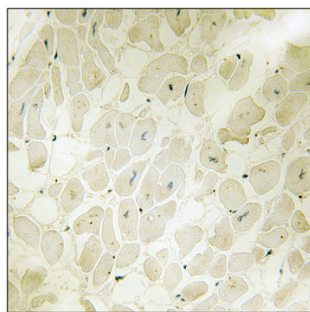
Catalog No	YP-Ab-16185
Isotype	IgG
Reactivity	Human;Mouse
Applications	IHC;IF;ELISA
Gene Name	ARHGEF17
Protein Name	Rho guanine nucleotide exchange factor 17
Immunogen	The antiserum was produced against synthesized peptide derived from human ARHGEF17. AA range:431-480
Specificity	p164-RhoGEF Polyclonal Antibody detects endogenous levels of p164-RhoGEF protein.
Formulation	Liquid in PBS containing 50% glycerol, 0.5% BSA and 0.02% sodium azide.
Source	Polyclonal, Rabbit,IgG
Purification	The antibody was affinity-purified from rabbit antiserum by affinity-chromatography using epitope-specific immunogen.
Dilution	Immunohistochemistry: 1/100 - 1/300. Immunofluorescence: 1/200 - 1/1000. ELISA: 1/5000. Not yet tested in other applications.
Concentration	1 mg/ml
Purity	≥90%
Storage Stability	-20°C/1 year
Synonyms	ARHGEF17; KIAA0337; TEM4; Rho guanine nucleotide exchange factor 17; 164 kDa Rho-specific guanine-nucleotide exchange factor; p164-RhoGEF; p164RhoGEF; Tumor endothelial marker 4
Observed Band	
Cell Pathway	cytosol,
Tissue Specificity	Highly expressed in the heart.
Function	function:Acts as guanine nucleotide exchange factor (GEF) for RhoA GTPases.,similarity:Contains 1 DH (DBL-homology) domain.,tissue specificity:Highly expressed in the heart.,
Background	function:Acts as guanine nucleotide exchange factor (GEF) for RhoA GTPases.,similarity:Contains 1 DH (DBL-homology) domain.,tissue specificity:Highly expressed in the heart.,
matters needing attention	Avoid repeated freezing and thawing!

**Usage suggestions**

This product can be used in immunological reaction related experiments. For more information, please consult technical personnel.

Products Images

Immunofluorescence analysis of HepG2 cells, using CARD6 Antibody diluted at 1:50. The picture on the right is blocked with the synthesized peptide.



Immunohistochemical analysis of paraffin-human heart. 1, Antibody was diluted at 1:200(4° overnight). 2, TRIS-EDTA of pH8.0 was used for antigen retrieval. 3, Secondary antibody was diluted at 1:200(room temperature, 30min). The picture on the right is blocked with the synthesized peptide.